

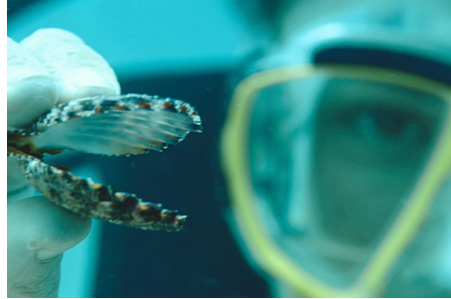
SCIENCE  
ECOLOGY  
ART  
SCHOOL

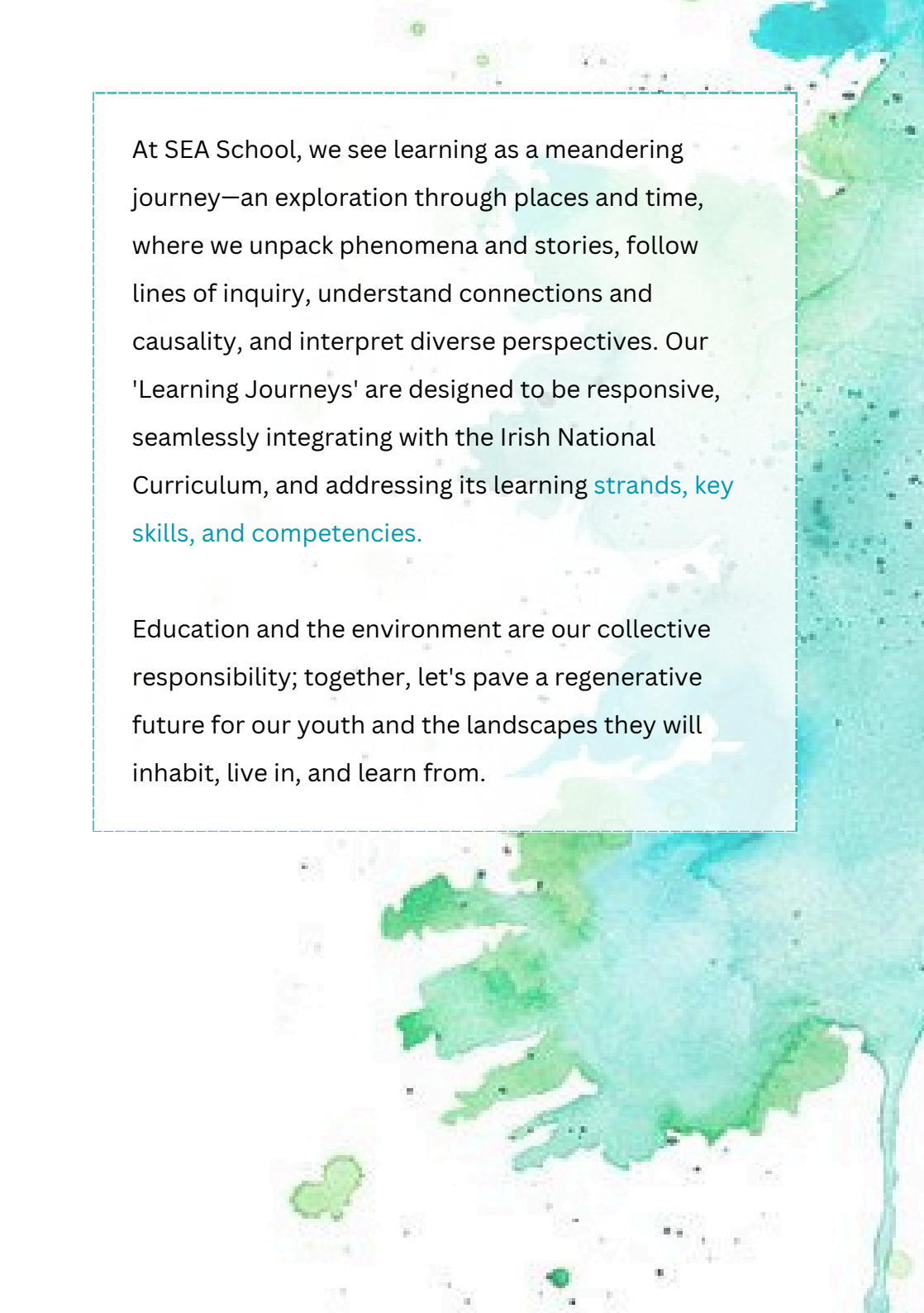
STUDIOS & LABS

*explore your backyard*

IN CONVERSATION WITH  
THE NATIONAL CURRICULUM  
BUILDING SYMBIOTIC RELATIONSHIPS  
BETWEEN  
OUR CLASSROOMS & ENVIRONMENT





A watercolor-style map of Ireland is the background of the page. The landmasses are painted in various shades of green, from light mint to deep forest green, with some darker spots suggesting trees or hills. The surrounding water is painted in shades of light blue and teal. The overall style is soft and artistic, with visible brushstrokes and a slightly textured appearance.

At SEA School, we see learning as a meandering journey—an exploration through places and time, where we unpack phenomena and stories, follow lines of inquiry, understand connections and causality, and interpret diverse perspectives. Our 'Learning Journeys' are designed to be responsive, seamlessly integrating with the Irish National Curriculum, and addressing its learning **strands, key skills, and competencies**.

Education and the environment are our collective responsibility; together, let's pave a regenerative future for our youth and the landscapes they will inhabit, live in, and learn from.

ALL OUR PROGRAMS HAVE BOTH **CLASSROOM** OR **OUTDOOR** OPTIONS  
& CAN BE CONDUCTED AT A FIELD-SITE IN YOUR LOCAL ENVIRONMENT





# PRIMARY YEARS

CLASSROOM & FIELD

[AGES 5 - 11]

**NATURE-BASED** LEARNING ENGAGES

ALL OUR **SENSES** AND **DIVERSE INTELLIGENCES**

SHAPING DEVELOPMENT IN THE **EARLY YEARS**

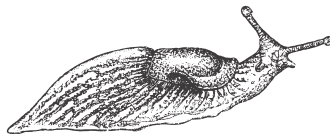
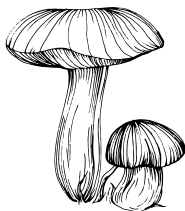
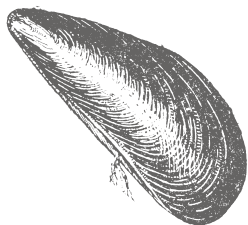


**NATURE INSPIRES WONDER,  
BELONGING & CURIOSITY**

**EACH WORKSHOP IS AN IMMERSIVE EXPERIENCE**

**ACTIVITIES WEAVE TOGETHER SKILLS AND CONCEPTS**

**RESPONDING TO STRANDS & ELEMENTS IN STEM, ART ED & SESE**



## WORKSHOP

## TOPICS

SHORELAND	TIDAL TREASURE HUNT	Exploring tide-pools & adaptations Deconstructing food chains Recording, Drawing, Questioning
	CREATURE FEATURES	
WOODLAND	THE HERBARIUM	Identifying leaves & trees Understanding seed travel Making extracts and potions
	BOTANICAL LAB	
WETLAND	MUD MAGIC	Exploring the types of wetlands Making meaning of soil Following the water cycle
	BOG IN A BOTTLE	

*SELECT YOUR HABITAT OF CHOICE. WE OFFER AN OUTDOOR & IN-CLASS WORKSHOP OPTION FOR EACH HABITAT. THE WORKSHOPS NEED NOT BE EXPERIENCED IN A PARTICULAR SEQUENCE. FIELD SESSIONS WILL TAKE 2 HOURS, WHILE THE IN-SCHOOL ALTERNATIVE CAN BE MODIFIED TO 1.5 OR 1 HOUR AS PER YOUR REQUIREMENT.*



# JUNIOR CYCLE

CLASSROOM & FIELD

[AGES 12 - 15]

PLACE-BASED LEARNING FOSTERS BIOPHILIA

HONING CREATIVE EXPRESSION & SCIENTIFIC INQUIRY

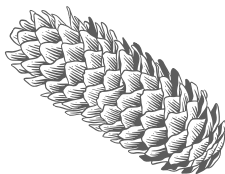
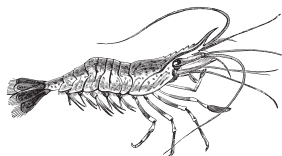
INITIATING LEARNING THROUGH DISCOVERY



EACH HABITAT IS A CLASSROOM,  
WHERE SCIENCE, ART & CULTURE MERGE

A WORKSHOP IS A JOURNEY THROUGH LANDSCAPE

RESPONDING TO KEY SKILLS & LEARNING OBJECTIVES FROM  
SCIENCE, GEOGRAPHY, VISUAL ART, MATH & APPLIED TECH



## WORKSHOP

## TOPICS

SHORELAND	TIDE-LINES	System structure & function Creative documentation
	ROCKPOOL REVELATIONS	Ecosystem niches
WOODLAND	DISCOVERY WALK	Cultural uses & ethnobotany Shifting perspectives
	NATURE'S CANVAS	Form, function and pattern
WETLAND	FRESHWATER FORENSICS	From macro-systems to microscopic Reading water - colour & chemistry
	FIELD OF FLOW	Re-connecting the water cycle

SELECT YOUR HABITAT OF CHOICE. WE OFFER AN OUTDOOR & IN-CLASS WORKSHOP OPTION FOR EACH HABITAT. THE WORKSHOPS NEED NOT BE EXPERIENCED IN A PARTICULAR SEQUENCE. FIELD SESSIONS WILL TAKE 2 HOURS, WHILE THE IN-SCHOOL ALTERNATIVE CAN BE MODIFIED TO 1.5 OR 1 HOUR AS PER YOUR REQUIREMENT.



# TRANSITION YEAR

WORKSHOPS | MODULES | PROJECTS

[AGES 16 -17]

OUR **ENVIRONMENT** AND  
A **SUSTAINABLE FUTURE** IS NOT A SUBJECT  
CONFINED TO THE SCIENCES & PHILOSOPHY!

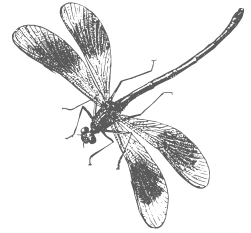
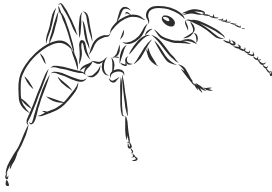


**CONNECTING OUR LANDSCAPES'  
PAST, PRESENT & FUTURE**

**EACH MODULE COMPRISES OF 3 WORKSHOPS**

**SIGN UP FOR A SINGLE WORKSHOP, A FULL MODULE OR A PROJECT**

**CUSTOMISE THESE TO SUIT YOUR UNIT, BUDGET & LOCATION**



## MODULE

## WORKSHOP

### THINK LIKE AN ECOLOGIST

Mapping Landscape & Culture  
Biodiversity Surveys  
Creative nature photography

### UNPACKING SUSTAINABILITY

United Nations SDGs in our lives  
Campaigns v/s greenwashing  
How to run a basic sustainability audit

### OCEAN FUTURES

An introduction to 'maritime Ireland'  
Exploring tide-pool indicators  
Seaweed identification & extracts

### READING WATER

Hydrodynamics & microbiology  
Navigation & weather  
Kayaking

*EACH WORKSHOP IS DEVELOPED AS A THREE HOUR SESSION, WITH A BREAK AFTER 1.5 HOURS. THE WORKSHOPS NEED NOT BE EXPERIENCED IN A PARTICULAR SEQUENCE & STUDENTS CAN CUMULATIVELY WORK TOWARDS COMPLETING A MODULE.*



# SENIOR CYCLE

FIELD LABS & CREATIVE CLASSROOMS

[AGES 16 -19]

DISCOVER HOW **SCIENCE** AND **ART** COMBINE

**EXPLORE, OBSERVE, EXPERIMENT** AND **UNDERSTAND**

MAKE CONNECTIONS ACROSS **ECOSYSTEMS**

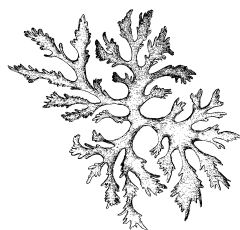
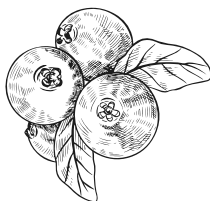
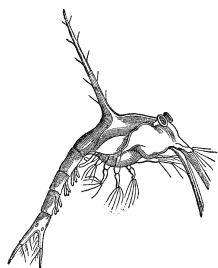


**EXPLORE ECOSYSTEMS & UNCOVER SCIENTIFIC  
DATA THROUGH CREATIVE OBSERVATION!**

**EACH WORKSHOP BRINGS LEARNING TO LIFE**

**ROOTED IN CROSS-CURRICULAR PRACTICE**

**BLENDING BIOLOGY, ART, GEOGRAPHY, DESIGN & COMMUNICATION**



## WORKSHOP

## TOPICS

SHORELAND	<b>GEOGRAPHIES OF CHANGE</b>	Scientific methods & topography System structure & function
	<b>TIDAL INTERPRETATIONS</b>	Connecting geo & eco scapes
WOODLAND	<b>WOOD WIDE WEB</b>	Ecological methods & data Biochemistry and communication
	<b>FOREST FICTION</b>	Creative writing & film
WETLAND	<b>THE BOG LAB</b>	Qualitative & quantitative data Designing tools to gather information
	<b>STREAM STUDIES</b>	Scientific reporting

*SELECT YOUR HABITAT OF CHOICE. WE OFFER AN OUTDOOR & IN-CLASS WORKSHOP OPTION FOR EACH HABITAT. THE WORKSHOPS NEED NOT BE EXPERIENCED IN A PARTICULAR SEQUENCE. FIELD SESSIONS WILL TAKE 2 HOURS, WHILE THE IN-SCHOOL ALTERNATIVE CAN BE MODIFIED TO 1.5 OR 1 HOUR AS PER YOUR REQUIREMENT.*



**The SEA School method is rooted in care & criticality;** for, with and in our local and global environments.

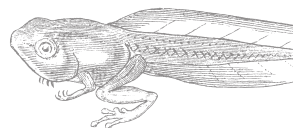
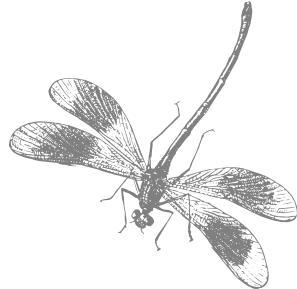
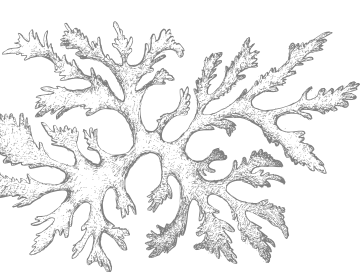


Through hands-on experiences, learners connect classroom theories and information to real-world situations.

We come to understand interconnectivity and the hidden layers of knowledge in our environments.



Students and teachers become explorers, collectively building knowledge in landscapes by combining lenses of **Science, Art & Ecology.**



**[www.seaschool.ie](http://www.seaschool.ie)**

**A copy of our health & safety statement, risk assessments & insurance  
are available on request.**

**Our operation complies with all regulatory requirements in Ireland & the European Union by  
maintaining necessary public, employee, and professional insurances and policies.**

**All content is developed and owned by SEA School, where learning is  
approached with respect to Open Source & Creative Commons best practices.**

